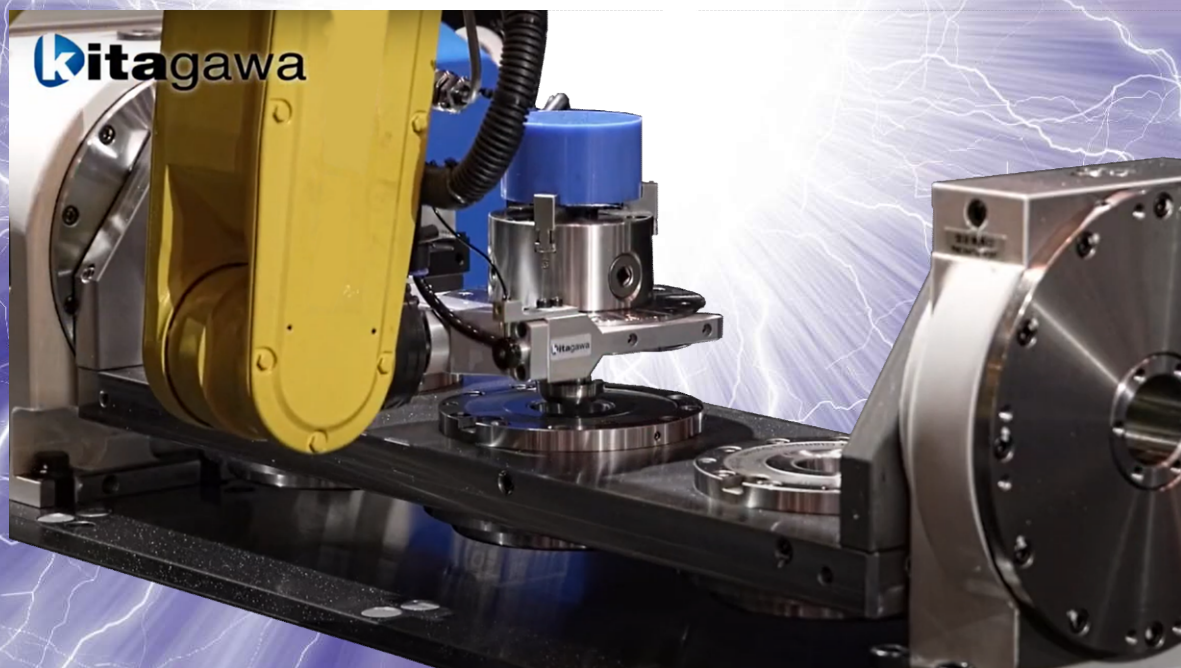


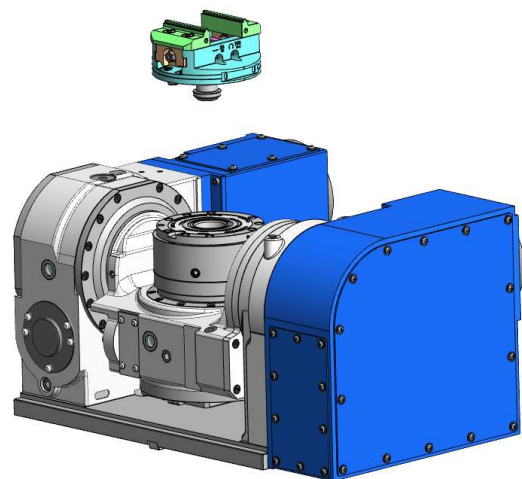
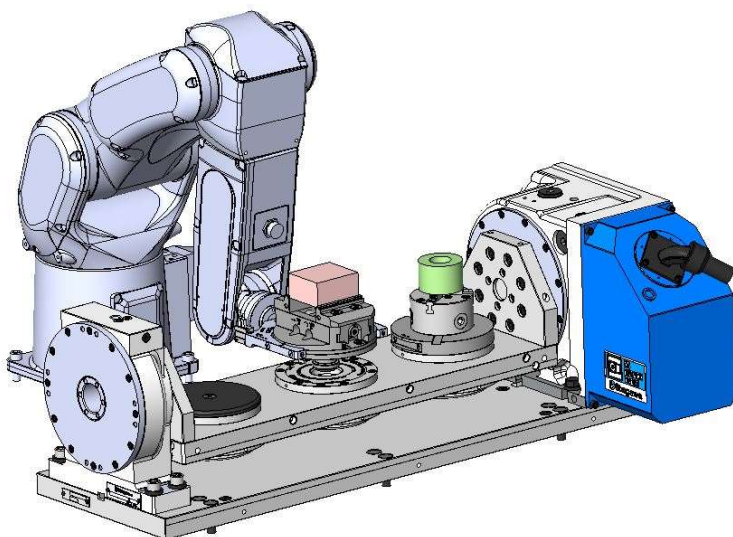
kitagawa

Pallet Clamping System

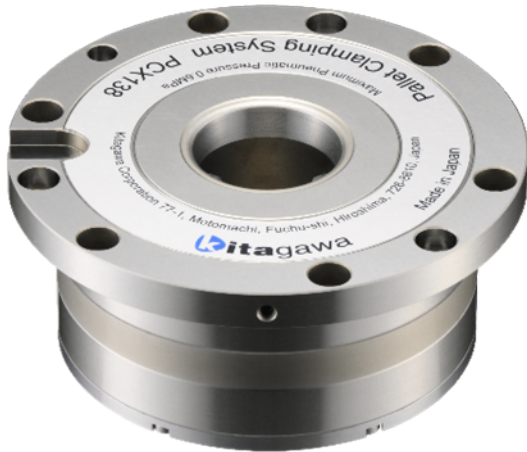
PCX138



- Significant reduction in pallet changeover time
- Factory automation and unmanned operation
- High-precision positioning
- Best match with NC rotary tables



Specification



Engaging force (Spring Grip)	7kN
Engaging force (Air Pressure 0.6MPa)	24kN
Maximum Operating Air Pressure	0.6MPa
Allowable moment (Rotation direction)	130Nm
Allowable moment (Toppling direction)	440Nm
Repeatability	5 μ m
Mass	3.9kg

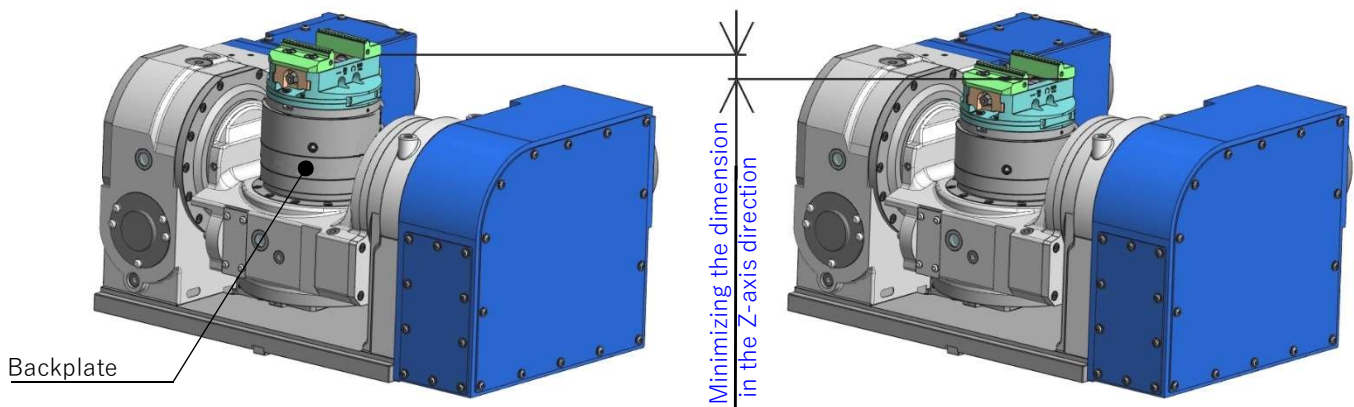
- High repeatability positioning accuracy of 5 μ m or less due to the two-surface location.
- It can be gripped using only the built-in spring, and when the machining load is high, it can be gripped using air clamping.
- No lubrication and low maintenance.
- All stainless steel
- 4 systems: unclamp, turbo clamp, air blow or taper hole seating confirmation, end face seating confirmation.

Note 1: During unclamping, the pallet mounting surface and the pallet do not come into close contact but remain slightly apart.

Note 2: The repeatability accuracy is based on our measurement method using the same pallet.

Best match with NC rotary tables

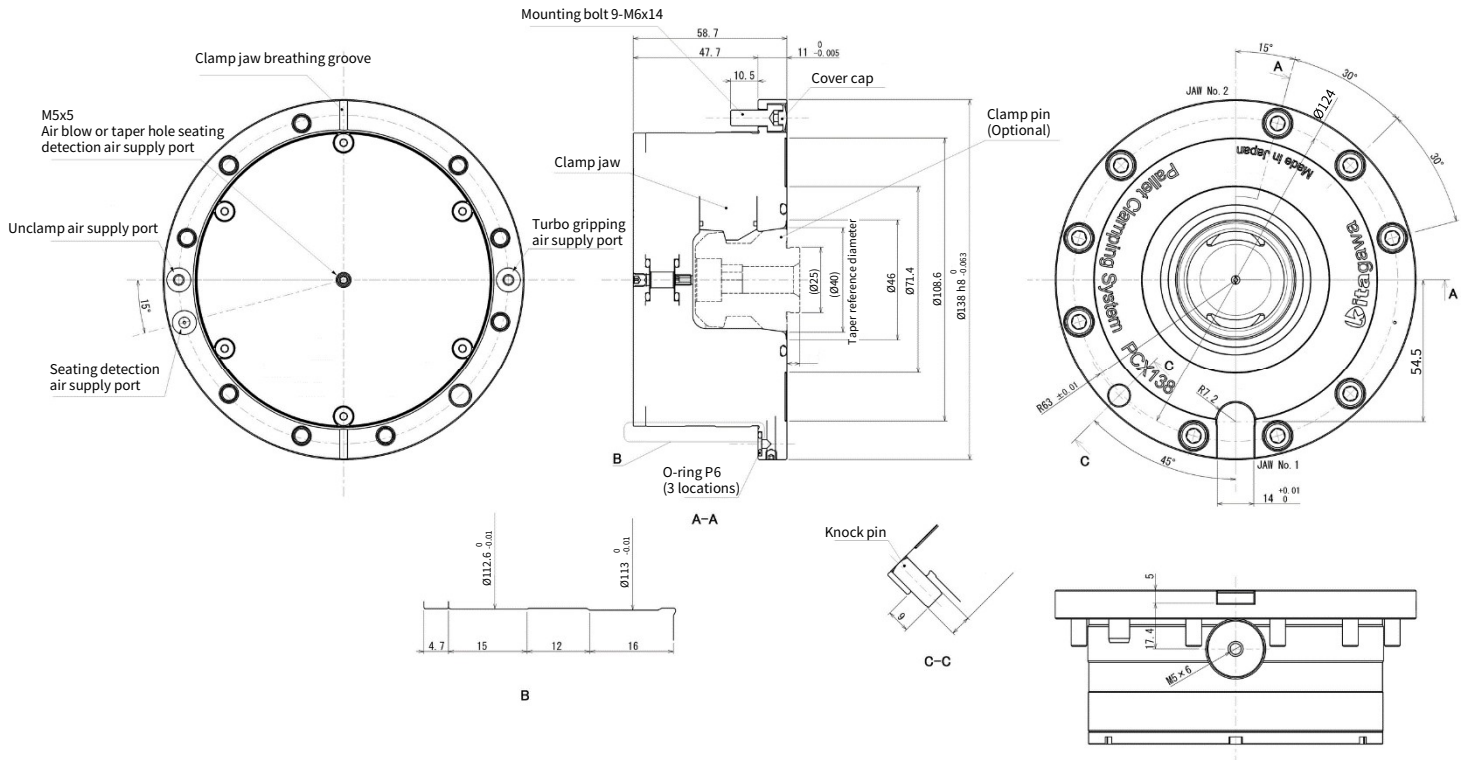
Kitagawa is also the NC rotary table manufacturer. Therefore, the interface on the rotary table side is dedicatedly designed for the pallet clamp mounting. Eliminating the backplate minimizes the Z-axis dimension and expands the machining area.



Installation on the standard NC rotary table

Installation on the NC rotary table designed with a dedicated interface

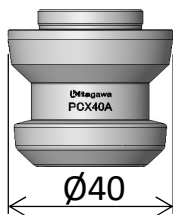
Dimensions



Options

Pin

Clamp Pin A	PCX40A	Centring pin (Omnidirectional positioning)
Clamp Pin B	PCX40B	Reference pin (One direction positioning)
Clamp Pin C	PCX40C	Clamp Pin (No positioning function)
Torque Pin	PCX14T	Phase alignment and torque reception
Protection Cover	PCX138-PC	Protective Cover



Clamp pin A



Clamp pin B



Clamp pin C

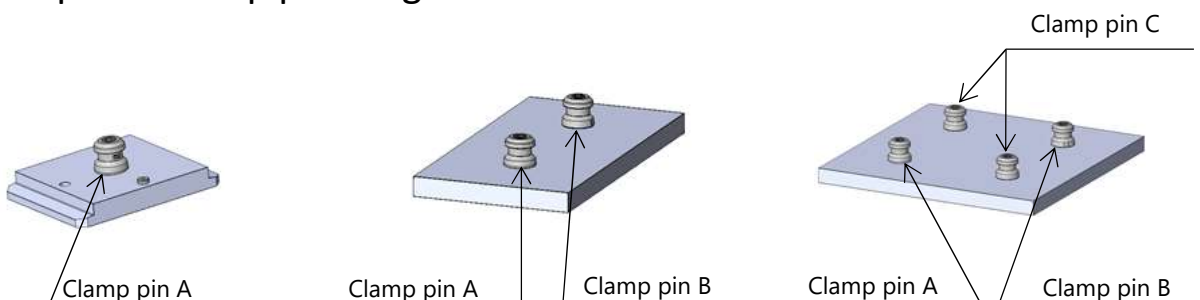


Torque pin

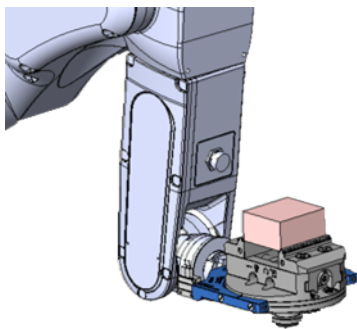


Protection cover

Example of clamp pin usage



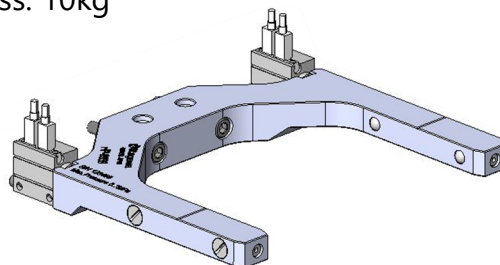
Pallet Conveying End Effector HP-9939



Designed specifically for automatic compatible pallet, it is suitable for narrow spaces and short pitch pallet clamps. (Only in horizontal position during pallet conveying)

Permissible pallet mass: 10kg

Body mass: 0.5kg



Various types of Pallets

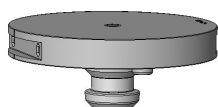
Model	Description	Suitability for automation	Mass (including fixture)	Remarks
PCXP-FRD	Pallet (Free circular type)	○	2.6kg	For additional machining, Thickness 20, S45C
PCXP-FRDAL	Pallet (Free circular type aluminium)	○	1.3kg	For additional machining, Thickness 25, A2017
PCXP-FSQ	Pallet (Free square type)	×	4.7kg	For additional machining, 199x159x20, S45C
PCXP-FSQAL	Pallet (Free square type aluminium)	×	2.2kg	For additional machining, 199x159x25, A2017
V75V13C-P	Centering vice	○	4.3kg	Pallet clamp dedicated
PCXP-SC3	Pallet (for SC-3-106 mounting)	○	4.3kg	3-inch scroll chuck
PCXP-SC4	Pallet (for SC-4-105 mounting)	○	5.6kg	4-inch scroll chuck
PCXP-SC5	Pallet (for SC-5-107 mounting)	○	7.0kg	5-inch scroll chuck
PCXP-ID08	Pallet (for Imao MBID08 mounting)	○	2.8kg	Inner diameter gripping, Range Ø13.5~20
PCXP-ID10	Pallet (for Imao MBID10 mounting)	○	2.9kg	Inner diameter gripping, Range Ø18~27
PCXP-ID12	Pallet (for Imao MBID12 mounting)	○	3.1kg	Inner diameter gripping, Range Ø23~35.5
PCXD-ID16B	Pallet (for Imao MBID16B mounting)	○	4.7kg	Inner diameter gripping, Range Ø29.3~51.5
PCXD-ID16D	Pallet (for Imao MBID16D mounting)	○	6.6kg	Inner diameter gripping, Range Ø29.3~103

Note 1) The scroll chuck and Imao inner diameter collet are not included with the pallet. Please arrange them separately.

Note 2) The Imao ID collet chuck MBID is not available from our company

Note 3) The free pallets may have a thickness tolerance of approximately 0.05mm. If a better tolerance is required, please make additional machining

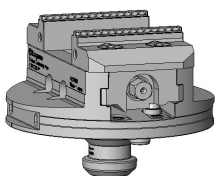
Note 4) The specifications of the centring vice are in accordance with the standard V75V13C



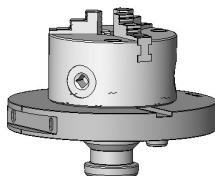
Free pallet round type
(Automation compatible)



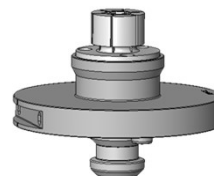
Free pallet square type



Centering vice pallet



Scroll chuck pallet



Inner diameter collet pallet

Kitagawa product technical information is available on the Kitagawa Web Showroom.
<https://prod.kiw.co.jp/exhibition/mtools/en/>



<https://www.kiw.co.jp>

<https://www.kitagawa.com>

<https://www.kitagawa.com.cn>

Kitagawa Corporation

Kitagawa Global hand Company

77-1 Motomachi, Fuchu-shi, Hiroshima-pref. 726-8610, Japan Tel. +81 847-40-0561 Fax. +81 847-45-8911

• Product specifications and appearance are subject to change without notice due to ongoing research and development.
 • The color of the actual product may be different from the catalogue's due to printing matters.
 • Catalog information is current as of April 2024

• The products listed in this document are subject to control under the Japanese Foreign Exchange and Foreign Trade Control Act.
 Before importing or exporting these products, you are required to consult Kitagawa and your government regarding the applicable regulations.